

# Product datasheet



## sHLA-A\*32:04bio

A\*3204, A3204, A\*32, A32, A32

<b>Serological Name</b>	A32
<b>Peptide Load</b>	Endogenous
<b>Modification</b>	Unmodified
<b>Conjugation</b>	Biotin
<b>SKU</b>	A3204bio

### Product Description

<b>Allele Name</b>	A*32:04 B2m
<b>HLA Class</b>	HLA Class I
<b>HLA Gene Locus</b>	HLA-A
<b>Alternative Allele Name A Chain</b>	A*3204, A3204, A*32, A32, A32
<b>Alternative Allele Name B Chain</b>	-
<b>Description</b>	Recombinant, truncated Class I soluble Human Leukocyte Antigen (sHLA), naturally folded and glycosylated, loaded with endogenous peptides.
<b>Serological Name</b>	A32
<b>Serological Split</b>	A3
<b>Bw4/Bw6 Assignment</b>	Bw4
<b>Bw4/Bw6 Sequence</b>	SLRIALR
<b>Allele Frequency [World Population]</b>	
<b>A chain</b>	0.1%
<b>B chain</b>	-

### Associated products

[A3204](#)  
[A3204pe](#)

## Product Specification

<b>Product name</b>	HLA-A*32:04bio
<b>HLA Species</b>	Human
<b>Host Cell Line Species</b>	Human
<b>Clone Designation</b>	EP266-B6
<b>Tail Specification</b>	VLDL
<b>Peptide Load</b>	Endogenous
<b>Modification</b>	Unmodified
<b>Conjugation</b>	Biotin
<b>Complexity</b>	Monomer
<b>Protein Format</b>	Recombinant, truncated, soluble, non-modified, biotinylated, endogenously loaded
<b>Storage Temperature</b>	4 °C (This product should be stored undiluted)
<b>Form</b>	Liquid
<b>Concentration</b>	300.0 µg/µl
<b>Formulation</b>	PBS/0.02% Sodium Azide
<b>pH</b>	7.4
<b>Purification Method</b>	Affinity Chromatography
<b>Grade</b>	Research Use Only [RUO]
<b>Authentication Verification</b>	Sequence Based Typing

## Protein Sequences

<b>Alpha Chain Sequence</b>	GSHSMRYFFT SVSRPGRGEP RFIAVGYVDD TQFVRFSDSA ASQRMEPRAP WIEQEGPEYW DQETRNKKAH SQTDRSLRI ALRYNQSEA GSHTIQIMYG CDVGS DGRFL RGYRQDAYDG KDYIALNEDL RSWTAADMAA QITKRKWEAA HEAEQLRAYL DGTCVEWLR R YLENGKETLQ RTDPPKTHMT HHPISDHEAT LRCWALGFYP AEITLTWQRD GEDQTQDTEL VETRPAGDGT FQKWA AVVVP SGEEQRYTCH VQHEGLPKPL TLRVSVSTDD DLA
<b>Beta Chain Sequence</b>	IQRTPKIQVY SRHPAENGKS NFLNCYVSGF HPSDIEVDLL KNGERIEKVE HSDLSFSKDW SFYLLYYTEF TPTEKDEYAC RVNHVTL SQP KIVKWRDRM

## Related Products

[A3201bio](#)  
[A0201bio](#)  
[A0301bio](#)  
[B0702bio](#)

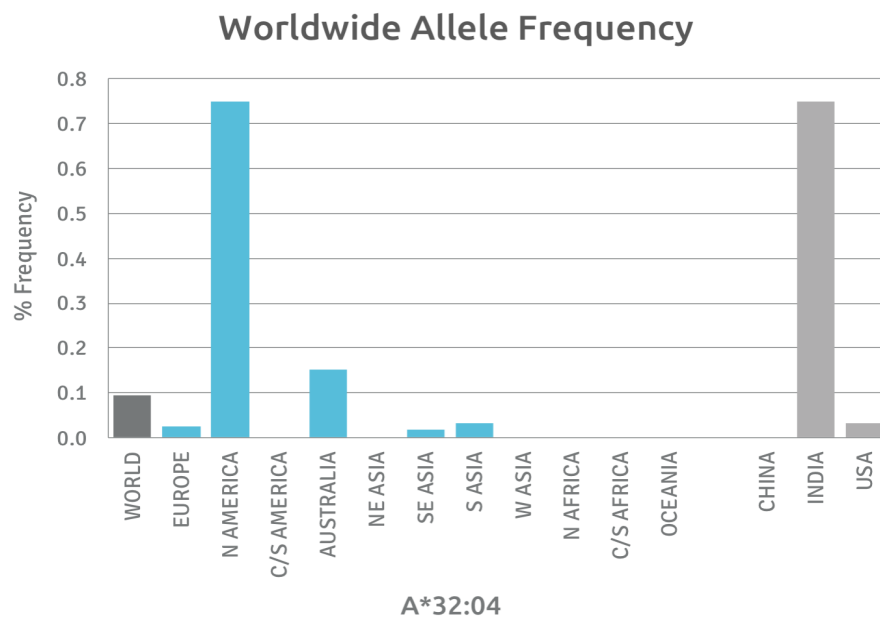
## Applications

- HLA Sandwich ELISAs
- HLA Direct ELISAs
- HLA-Sera Antibody Assays
- HLA Controls in ELISA Assays
- HLA Assay Standards
- HLA Blocking Assays
- HLA Neutralizing Assays
- HLA Competition Assays
- HLA Bead Assays
- HLA Immunization Procedures

## Recommended Antibodies

- W6/32
- Anti-B2m

## Allele Frequency



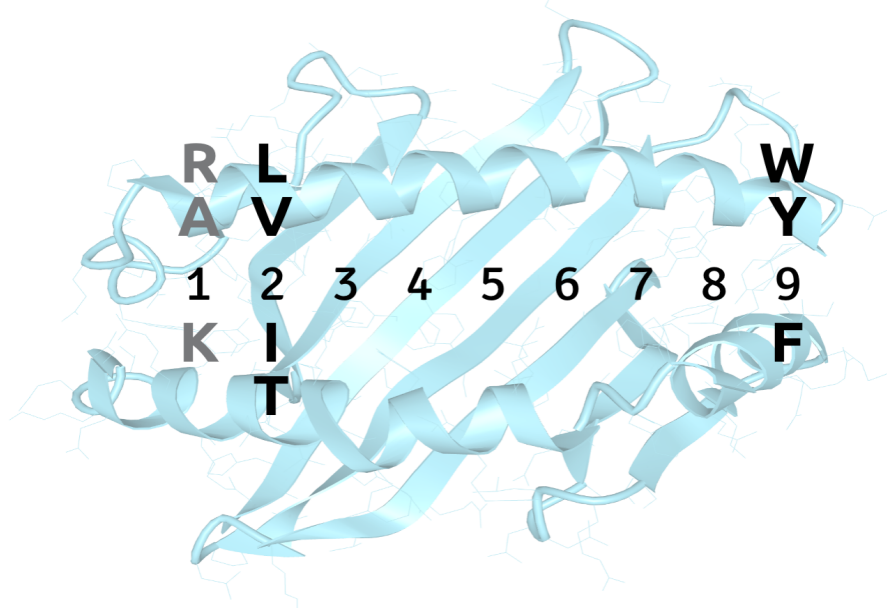
Please note:  
ALL PRODUCTS ARE FOR RESEARCH USE ONLY. NOT FOR COMMERCIAL USE IN DIAGNOSTIC PROCEDURES.  
For more information, please visit our Policies section on our website. For licensing inquiries, please contact

[licensing@hlaprotein.com](mailto:licensing@hlaprotein.com)



## Motif

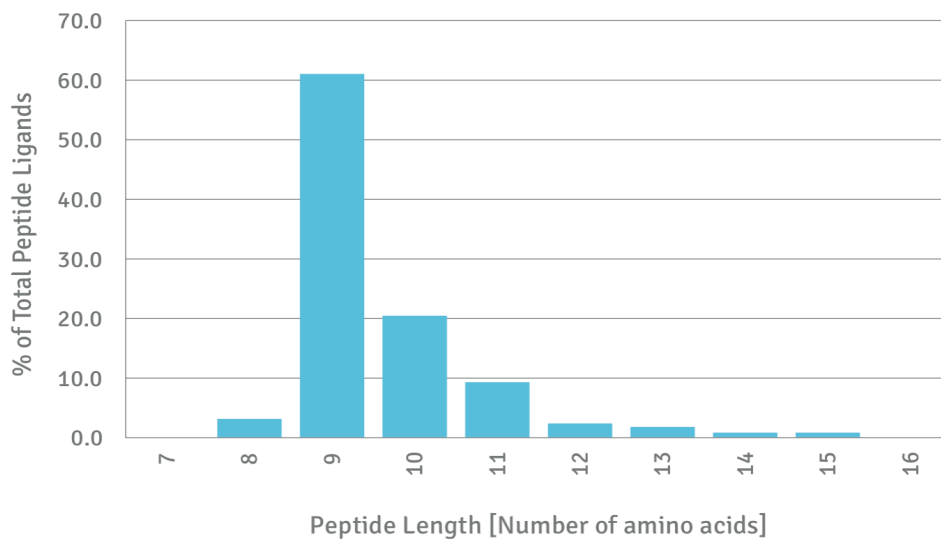
### A\*32:04 BINDING MOTIF



## Length Distribution

### HLA Length Distribution

**A\*32:04**



Please note:

ALL PRODUCTS ARE FOR RESEARCH USE ONLY. NOT FOR COMMERCIAL USE IN DIAGNOSTIC PROCEDURES.

For more information, please visit our Policies section on our website. For licensing inquiries, please contact

[licensing@hlaprotein.com](mailto:licensing@hlaprotein.com)

# Eplet Assignments

A\*32:04

Eplet	Polymorphic Residues	Antibody Reactivity
9F	9F	
44RM	44R45M	
44RME	44R45M46E(67V)	
62QE	62Q63E	Yes
65RA	65R69A	
65RNA	65R66N69A	Yes
66N	66N	
66NH	66N70H	
66NV	66N67V	
71HS	70H71S	
76ES	76E77S	
76ESI	76E77S80I	Yes
77S	77S	
80I	80I	Yes
81ALR	81A82L83R	
82LR	82L83R	Yes
95I	95I	
97I	97I	
99Y	99Y	
105S	105S	
109F	109F	
114R	114R	
116D	116D	
138MI	138M142I	Yes
144K	144K	Yes
144KR	144K145R	Yes
149AH	149A151H	
150AAH	149A150A151H	Yes
150AH	150A151H	
151AHE	150A151H152E	
151H	151H	
152E	152E	
156L	156L	
161D	161D	Yes
163T	163T	
193PI	193P194I	
275EL	275E276L	

